

Background



- **Progress towards the ending the AIDS epidemic by 2030** critically depends on:
 - adoption and implementation of global guidelines that address evidenced-based approaches to optimally treat PLWHIV and how to best deliver interventions
- ***2013 Consolidated ARV Guidelines***, contains 50 new and updated policy recommendations on the clinical, operational, programmatic and M&E aspects of HIV treatment and care.
- **From Sept 2013 – Sept 2014**, WHO with partners conducted 9 dissemination meetings, across 6 WHO regions, serving > 100 countries



Major WHO Normative Documents on HIV Treatment, Care and Prevention (2013-2014)

2013



2013
Consolidated
WHO ART
Guidelines



2013 Global Update
on HIV Treatment



Use of devices
for adult MC for
HIV prevention



Guidance for HIV
HTC & Care for
Adolescents

2014



Skin & Oral
Manifestations
in PLHIV



2013-2016 ARV
forecast & drug
price database



March 2014
Guidelines
Supplement



Screening, care and
Treatment of
Hepatitis C infection



Consolidated
guidelines for
key populations



Technical
report on
access to
ARVs in
LMIC



2014 Update Report on Health
Sector Response to HIV



Technical update on VL
testing implementation



Technical report on use
and availability of HIV
diagnostics



December 2014
Guidelines
Supplement



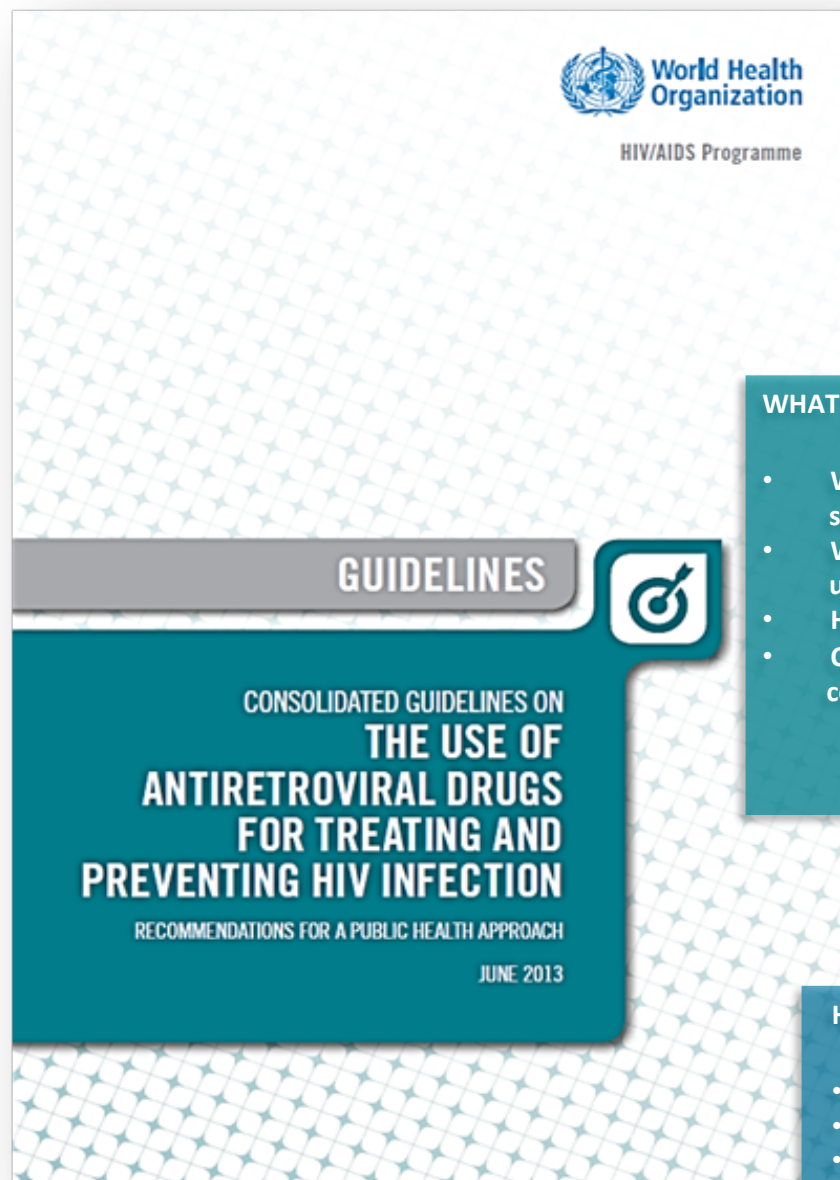
QA for PoCT
handbook

2015



Gradings of **R**ecommendation **A**ssessment, **D**evelopment and **E**valuation

| | |
|-----------------------------------|--|
| QUALITY OF THE EVIDENCE | By outcome: <ul style="list-style-type: none">• High quality• Moderate• Low• Very low |
| STRENGTH OF RECOMMENDATION | Strong or Conditional depends on: <ul style="list-style-type: none">• Quality of evidence• Balance of benefits and harms• Values and preferences• Resource use• Feasibility |



WHAT TO DO?

- When to start or switch
- Which regimen to use
- How to monitor
- Co-infections & co-morbidities

HOW TO DECIDE?

- Prioritization
- Equity and ethics
- Monitoring & Evaluation

Clinical

Operational

Guidance for
Programme
Managers

HOW TO DO IT?

- Service delivery
- Diagnostics
- Drug supply

Clinical recommendations will address:



When to Start ART
When to Start ART during TB treatment



What to Use 1st, 2nd, & 3rd lines
Toxicity



PrEP
Infant Prophylaxis and Infant feeding



Diagnostics: Early Infant Diagnosis
Viral Load, POC tests and future role of CD4



Operational recommendations will address:



Packages of Care
HIV Testing Services
Linkage to care interventions;



Improving the Continuum of Care:
ART Initiation Approaches, Retention, Adherence,
Frequency of clinic and pharmacy visits



Task shifting, Infant & Paediatric HIV testing settings,
Connectivity for rapid results ,
Adolescent friendly services,

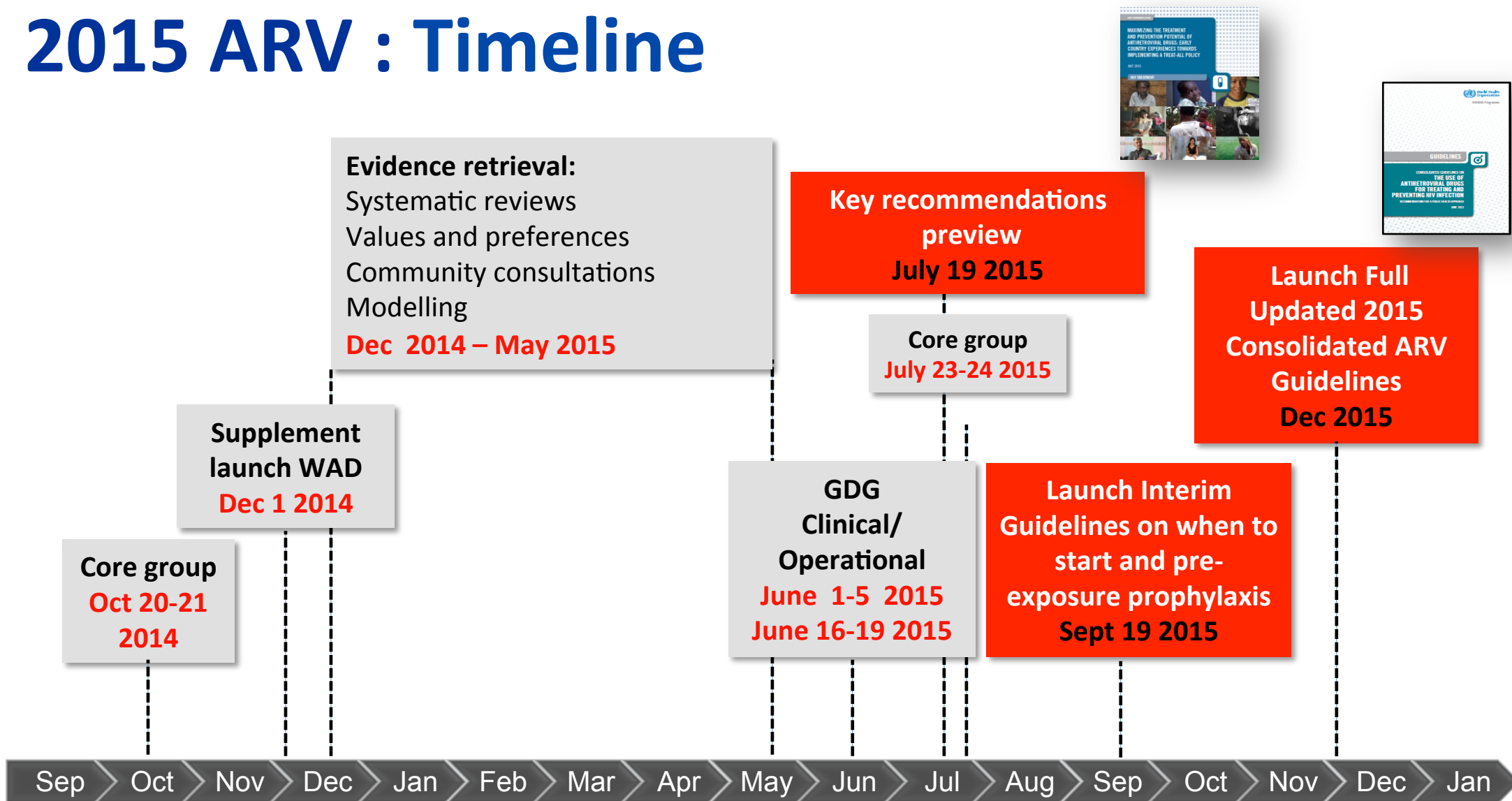


Service Integration :
HIV& STI/FP, HIV&MH and HIV&CVD
Quality of care and Prioritization



World Health
Organization

2015 ARV : Timeline



GUIDELINES

**GUIDELINE ON WHEN
TO START ANTIRETROVIRAL
THERAPY AND
ON PRE-EXPOSURE
PROPHYLAXIS FOR HIV**

SEPTEMBER 2015

Today we will address

1. When to Start in Pregnant and Breast Feeding Women
2. When to Start in Children and Adolescents
3. PreP guidance with a special note on pregnant women