

# CASH AND CASH PLUS INTERVENTIONS

Accelerating progress for Africa's adolescents



Lucie Cluver, Rachel Yates, Elona Toska, Mona Ibrahim  
16<sup>th</sup> November 2021



# AFRICA'S ADOLESCENTS



# THE ACCELERATE HUB



- University of Oxford and University of Cape town, partnering with 12 other academic institutions around Africa and Europe
- Funded by UK Research Innovation, Global Challenges Research Fund (UKRI), Oak Foundation
- Demand-led research working with UN, African Union, civil society
- Identifying interventions that can impact at scale across multiple SDGs for adolescent boys and girls.





# COVID INCREASING RISKS.

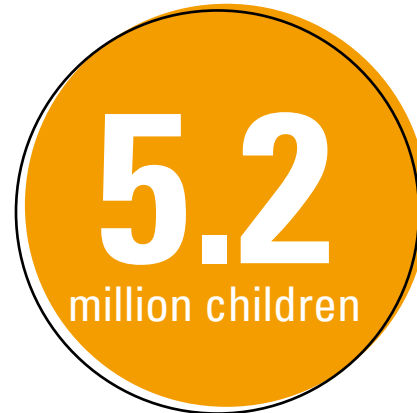
## For adolescent girls and young women



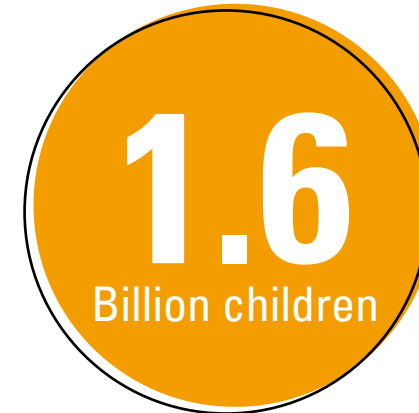
Anticipated  
unplanned  
pregnancies  
(for 6 mth lockdown) UNFPA)



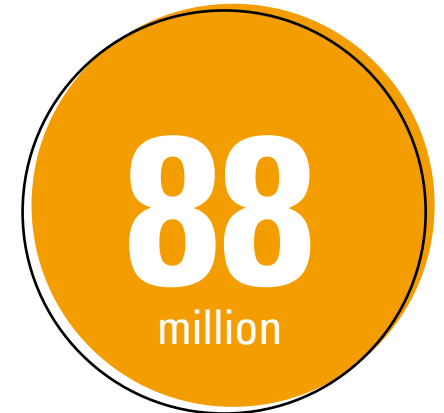
will marry as  
children  
(UNICEF July 21)



Experience loss of  
care giver  
(Hillis et al Lancet 2021)



Out of school at the  
peak of crisis  
(World Bank)



will be pushed  
into extreme  
poverty  
(World Bank 2021)

# HEALTH + RESPONSE TO COVID-ORPHANHOOD



Children reach their full potential in safe & loving families

**PREVENT COVID-19-deaths of caregivers**

**PREPARE family-based support, avoid institutionalization**

**PROTECT children from poverty, adversity and violence**

Accelerated equitable vaccine uptake

Safe and timely clinical care

Public health

Kinship care, fostering, adoption

Case management

CASH + CARE: Economic + Parenting Support

EDUCATION: Safe schools & life skills

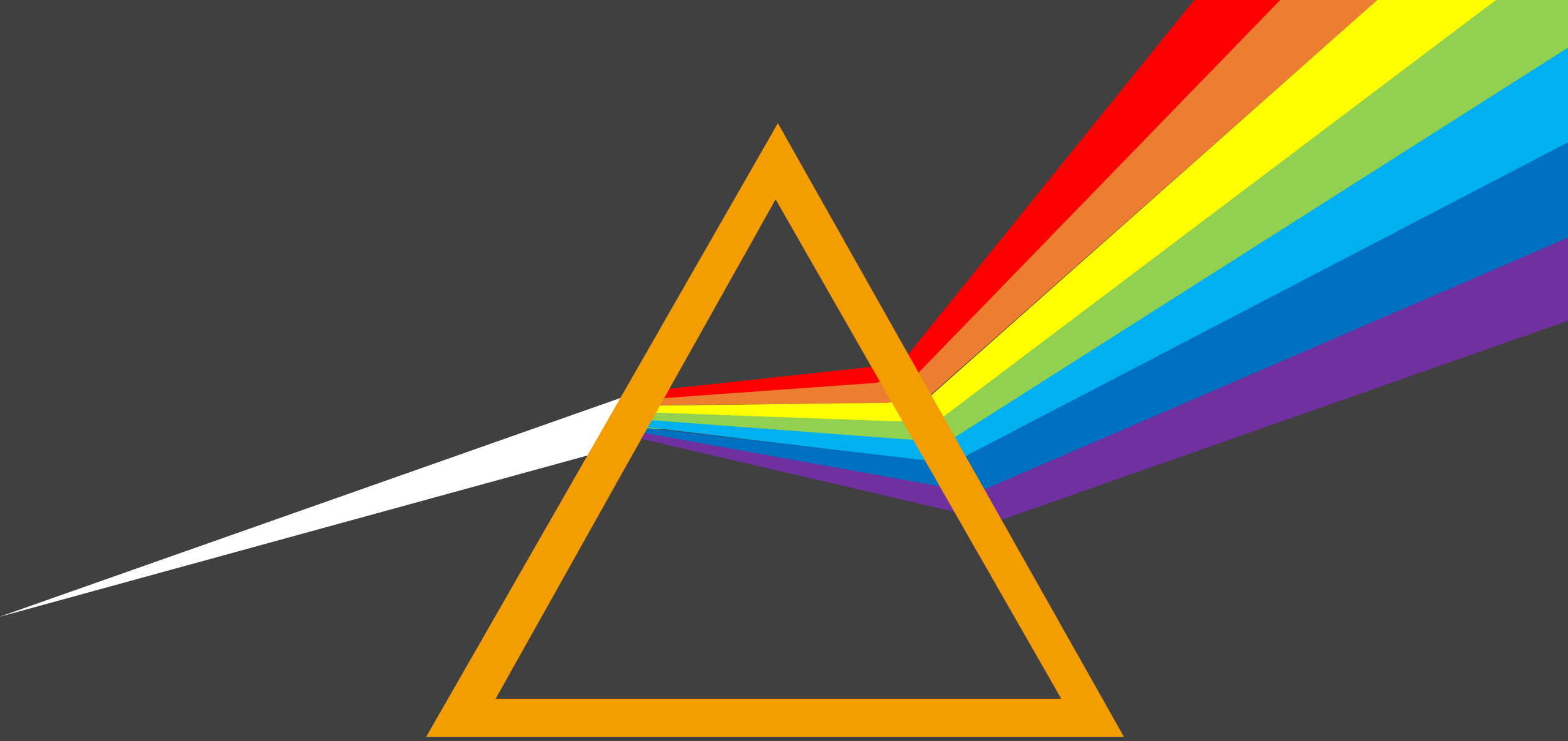
# BANG FOR BUCK



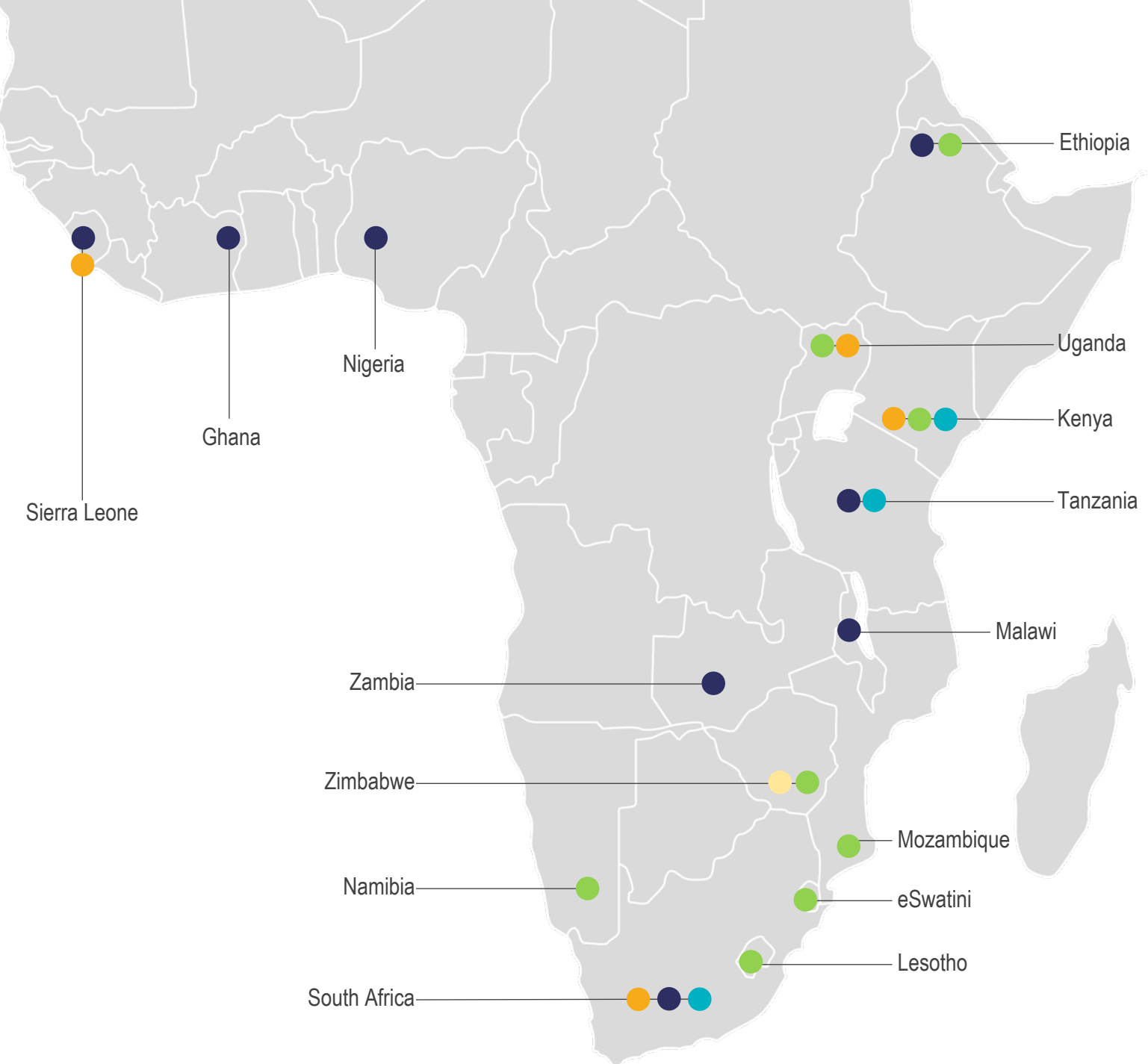
“...opportunities exist to accelerate progress by leveraging the interlinkages across Goals”









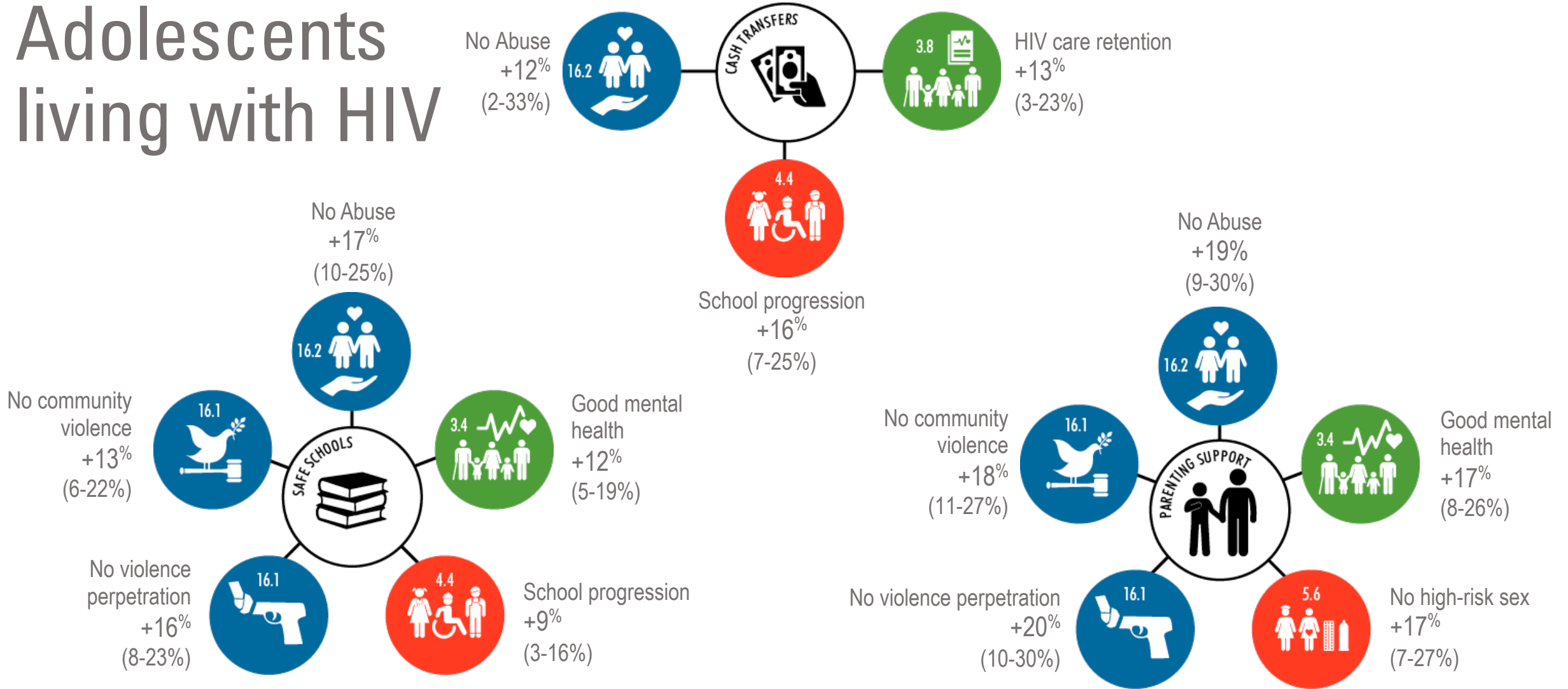


# HUB RESEARCH

- Completed cohorts
- MICS
- VACS
- RCT
- Teen advisory groups

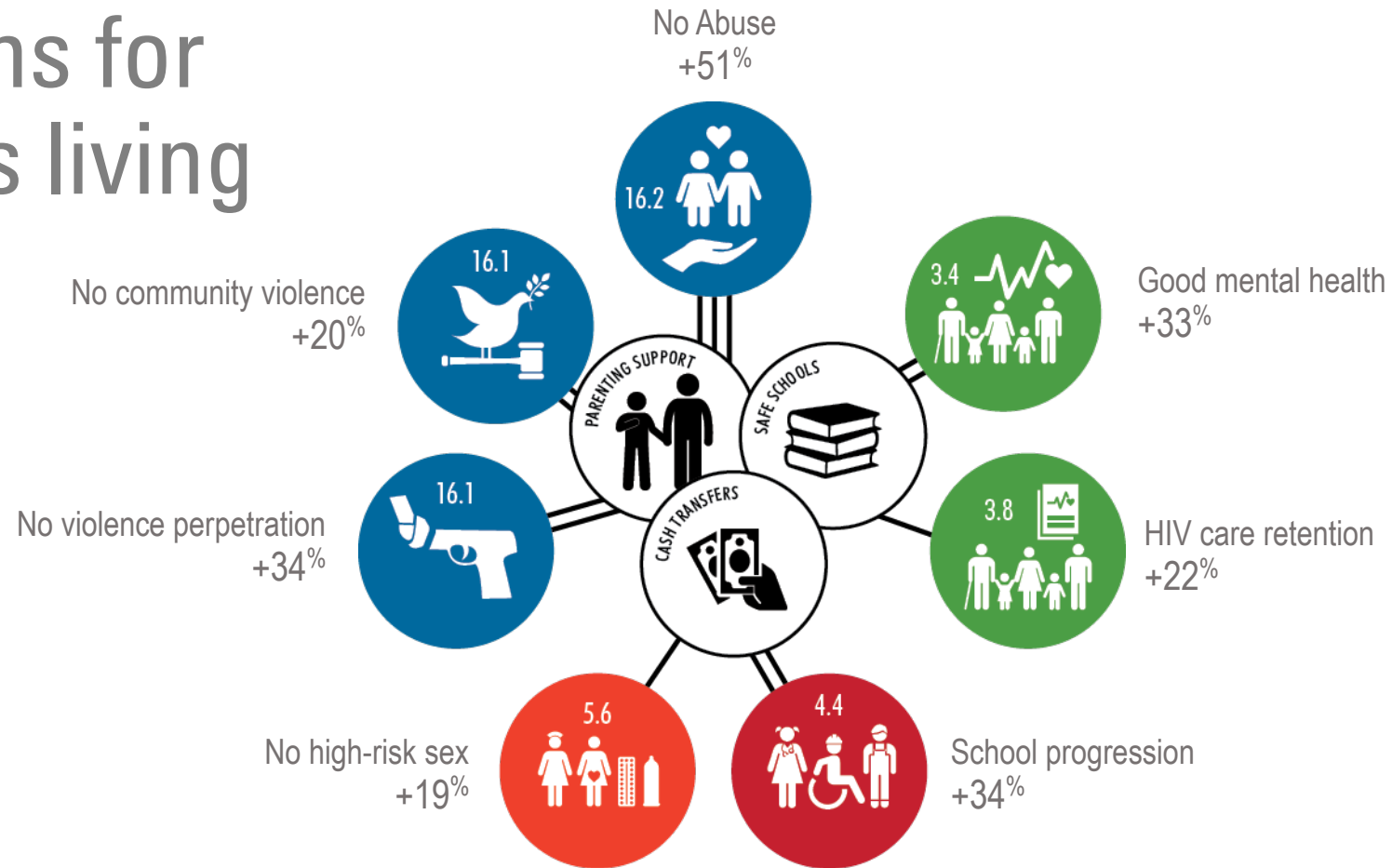
# SOUTH AFRICA

## Adolescents living with HIV

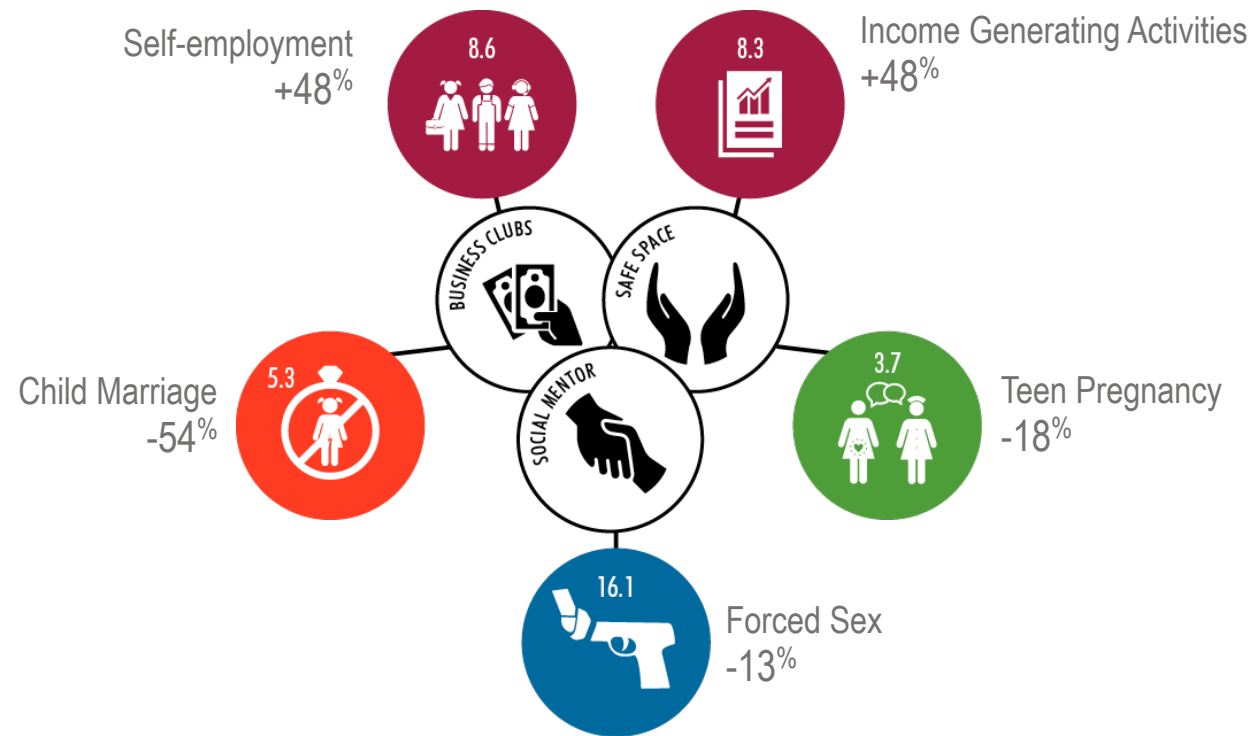


# SOUTH AFRICA

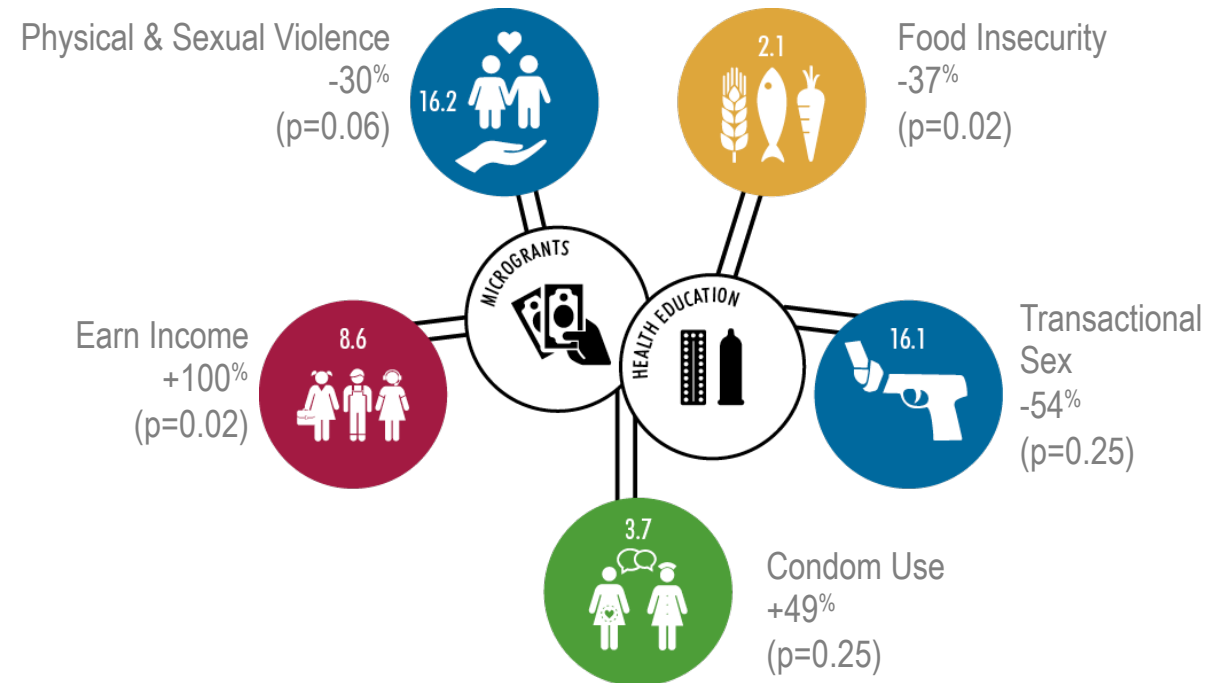
## Cont. Cash plus combinations for adolescents living with HIV



## UGANDA girls

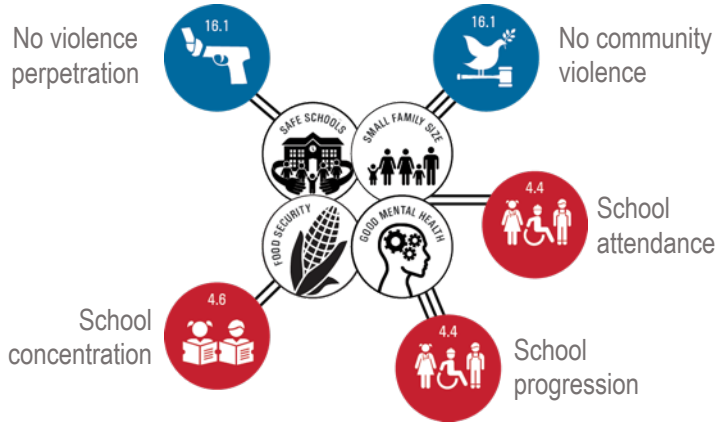


## ZIMBABWE girls



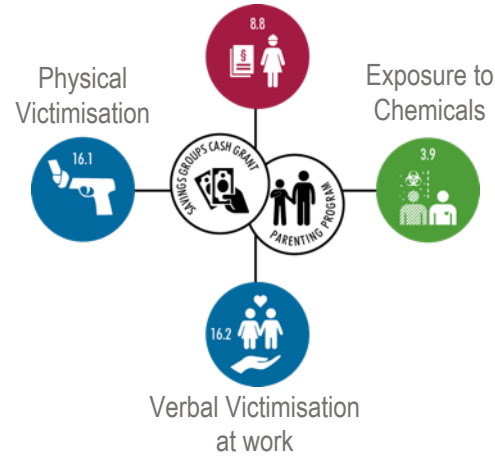
## NIGERIA

### Adolescent girls

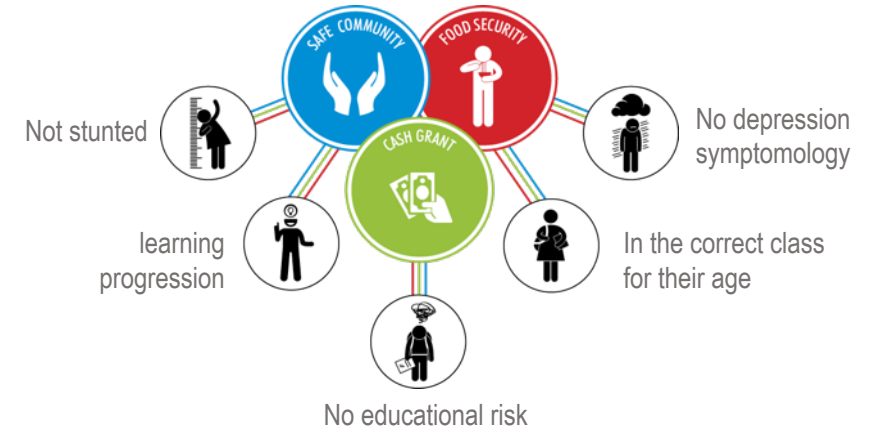


## BURKINA FASO

### Hazardous Work



## MALAWI AND SOUTH AFRICA



## SIERRA LEONE

### Adolescent girls



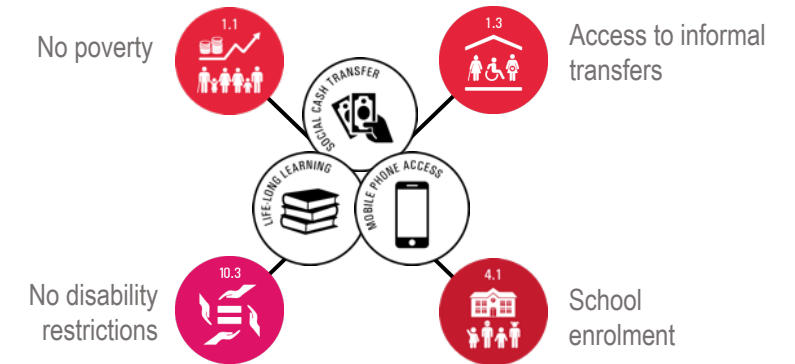
## WAJIR KENYA

### Adolescent girls



## ZAMBIA

### Adolescents with disability



\*Girls who were not in school at baseline (25.6% of full sample)

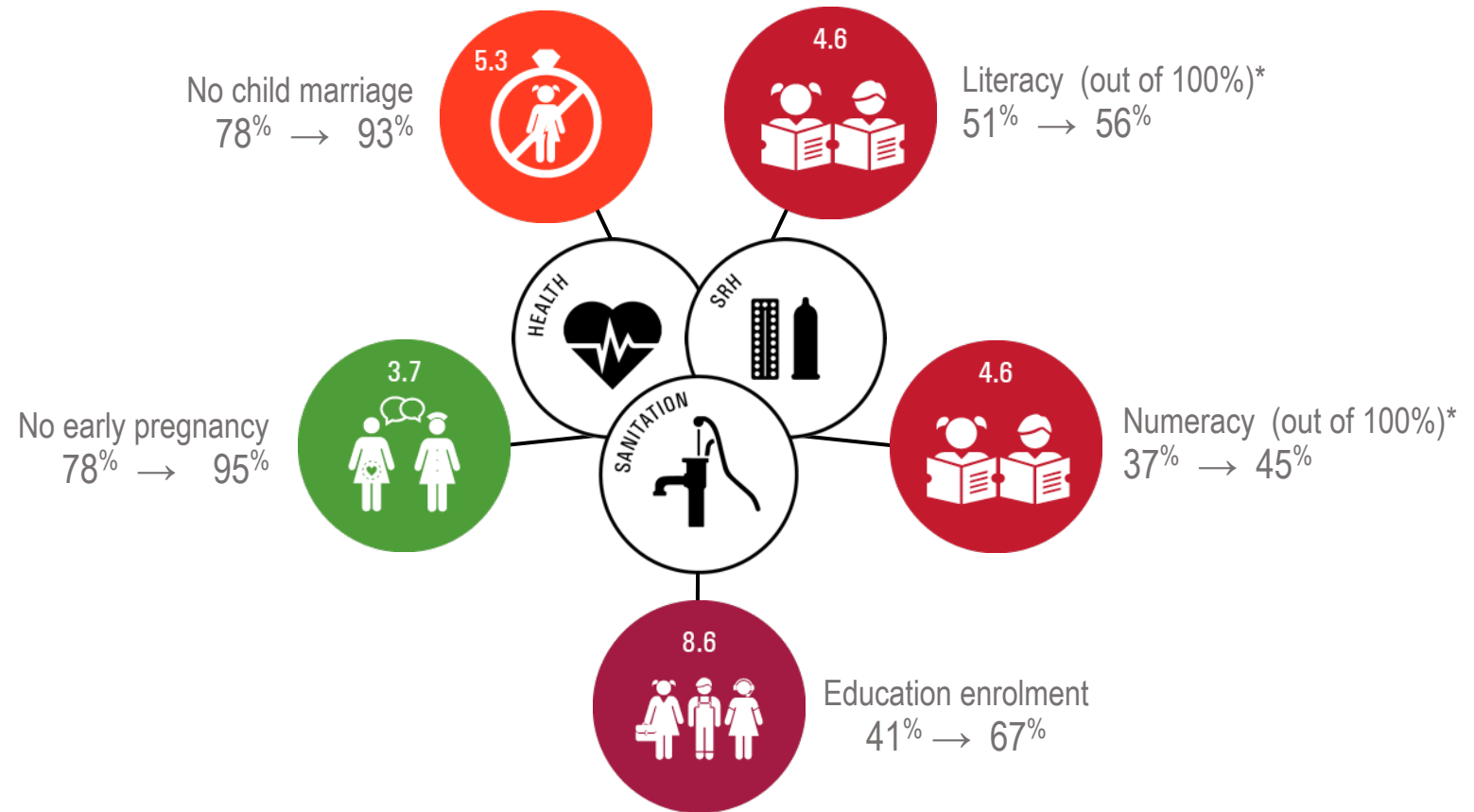
# ETHIOPIA HEALTH EXTENSION PROGRAM

## Girls



No evidence of association:

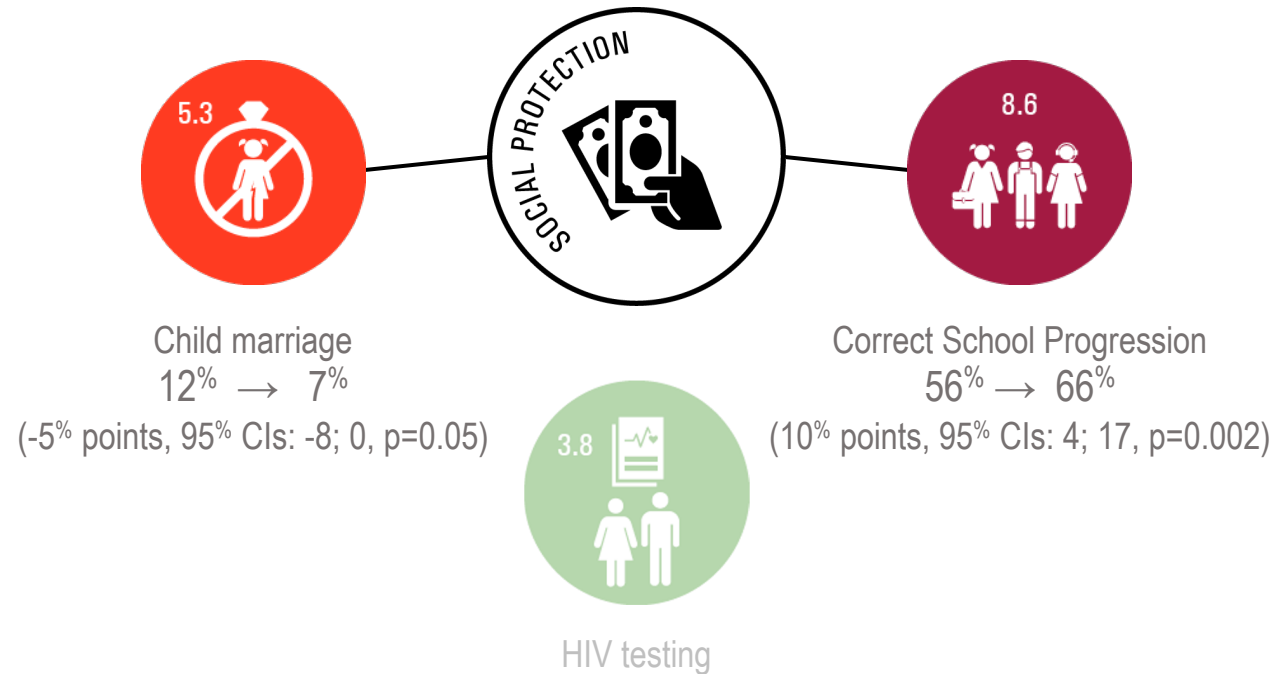
- Not underweight
- Very good health
- Knowledge about fertility
- Knowledge about STIs
- <3hrs per day on domestic tasks
- > 4hrs per day in paid work





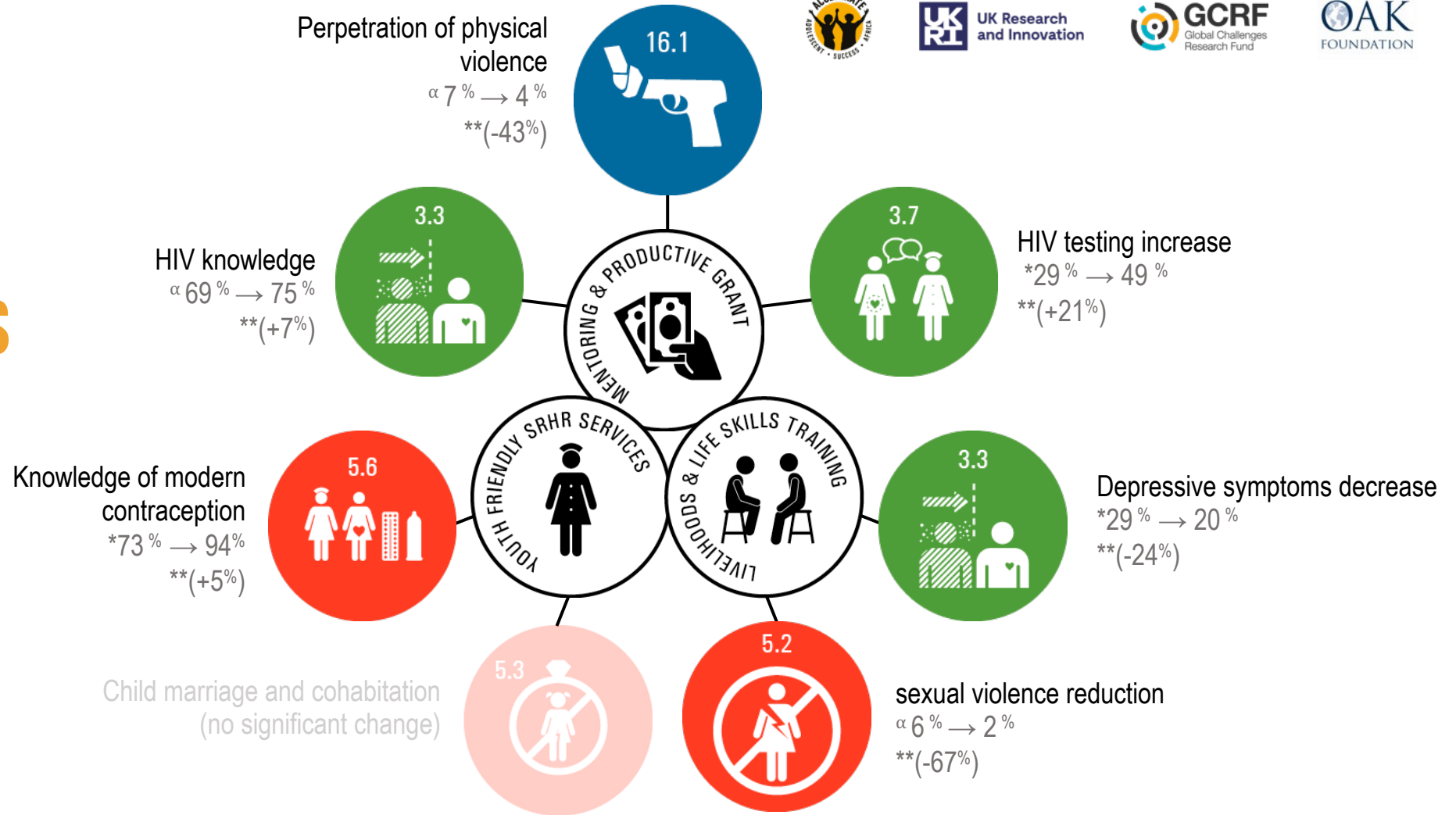
# ZIMBABWE

## Adolescent girls



# TANZANIA UJANA SALAMA

## ADOLESCENTS CASH PLUS PROGRAMME



\*Change in treatment group over baseline \*\* Percentage change (percentage point impact/baseline mean)  $\alpha$  Control v. treatment means at endline for indicators not measured at baseline.

Tanzania Adolescent Cash Plus Evaluation Team. A Cash Plus Model for Safe Transitions to a Healthy and Productive Adulthood: Round 3 Report, UNICEF Office of Research – Innocenti, Florence. 2020.

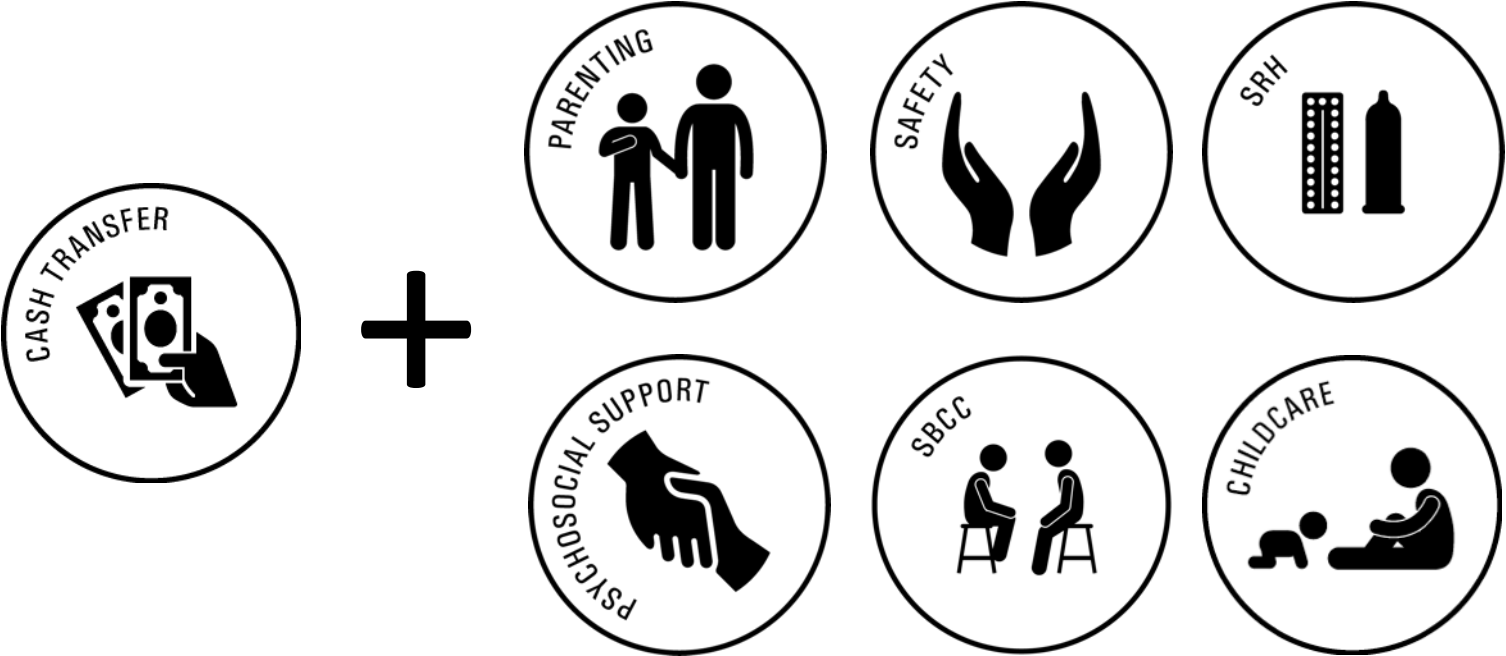
Diagram model by



Cash Plus evaluation and implementation funded by



# EMERGING CASH + ACCELERATORS...



# CASH PLUS ACROSS THE LIFE COURSE



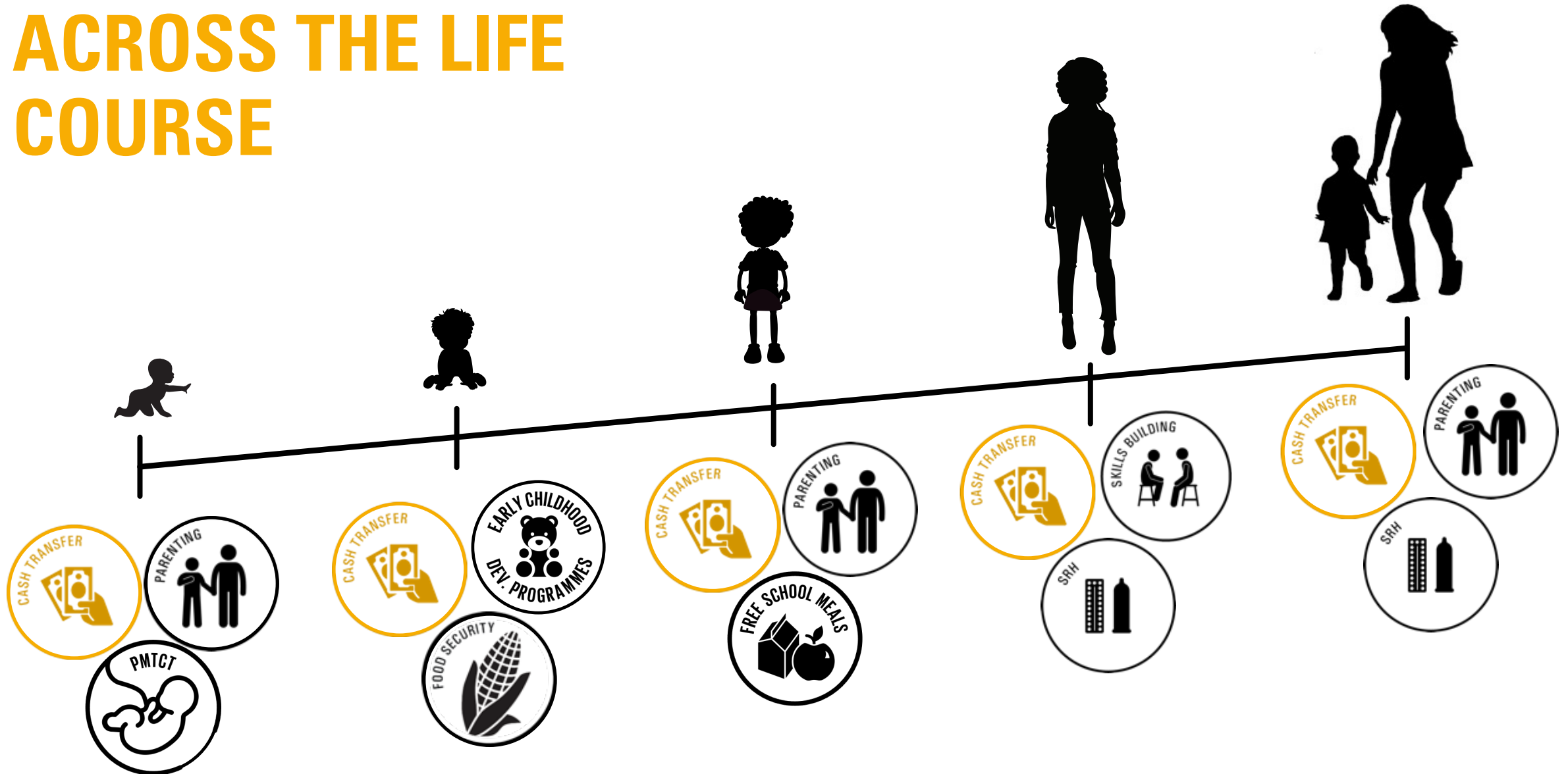
World Food Programme



UK Research and Innovation



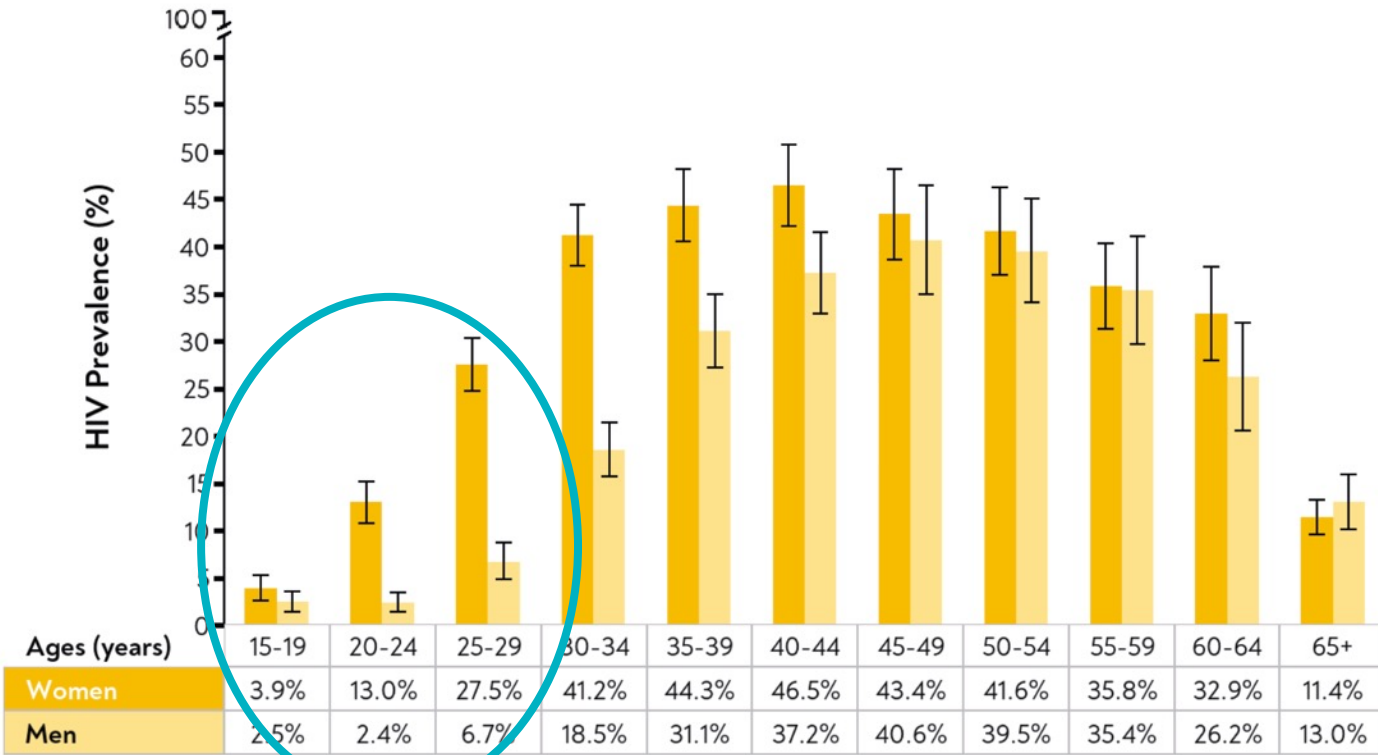
Global Challenges Research Fund



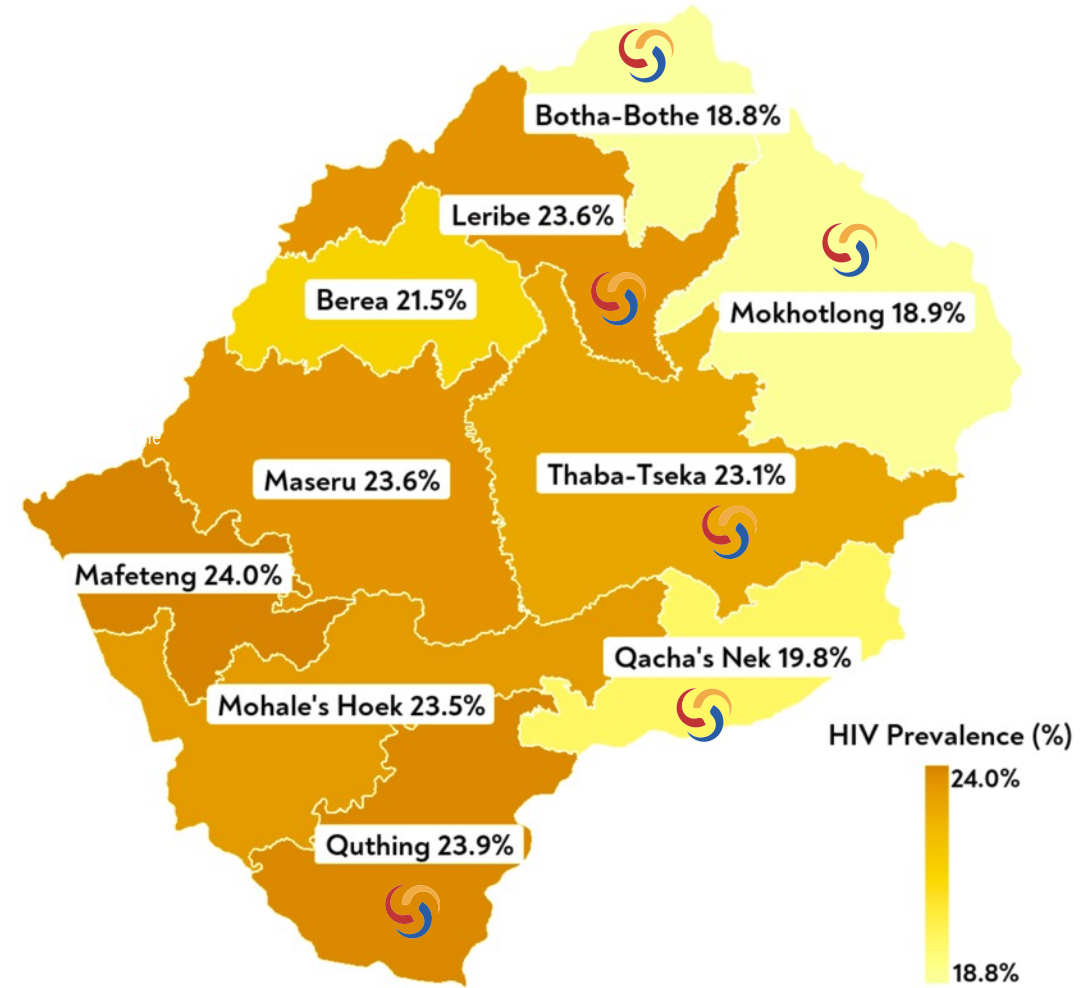
# SUPPORTING EVIDENCE BASED APPROACHES



# ECONOMIC STRENGTHENING

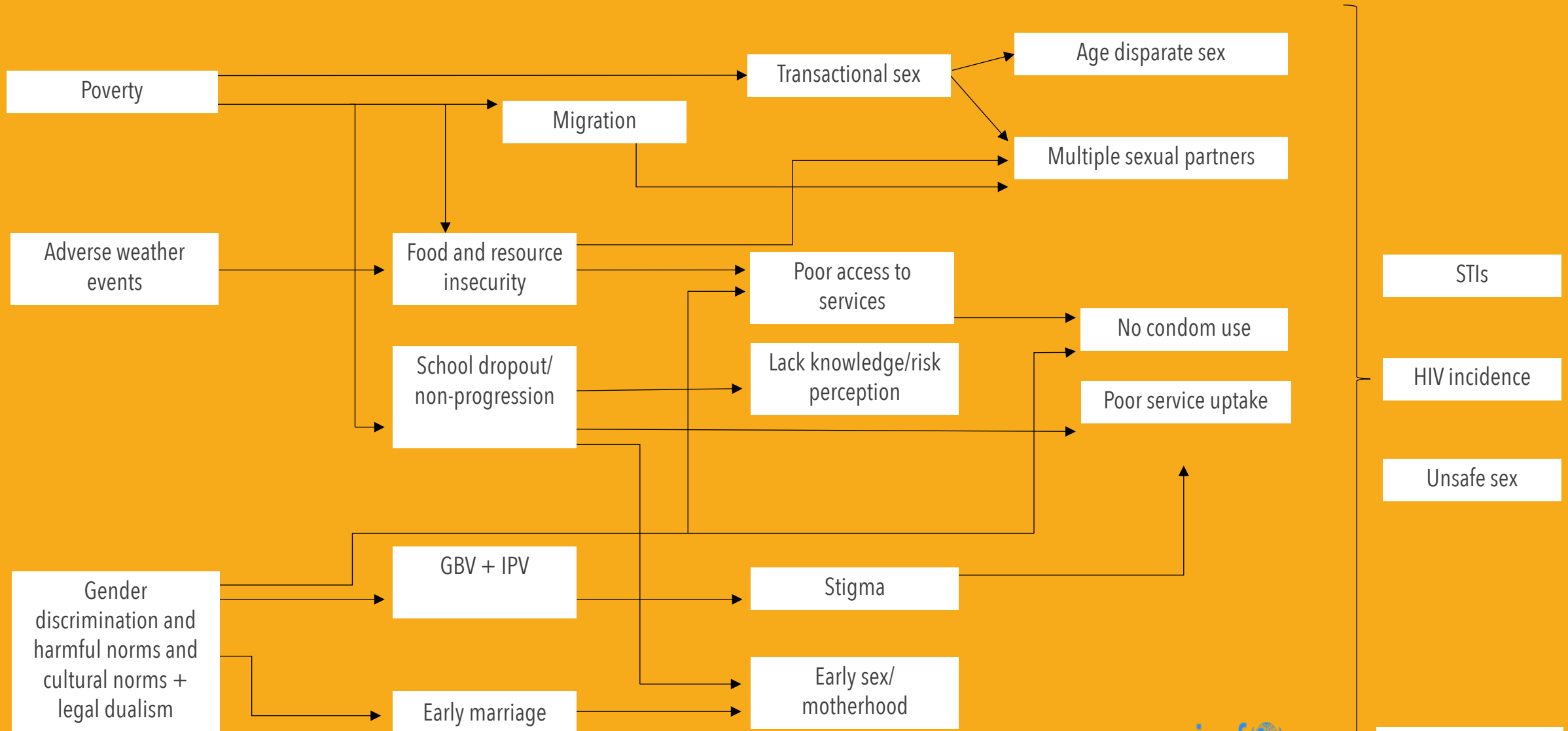


Error bars represent 95% CIs.



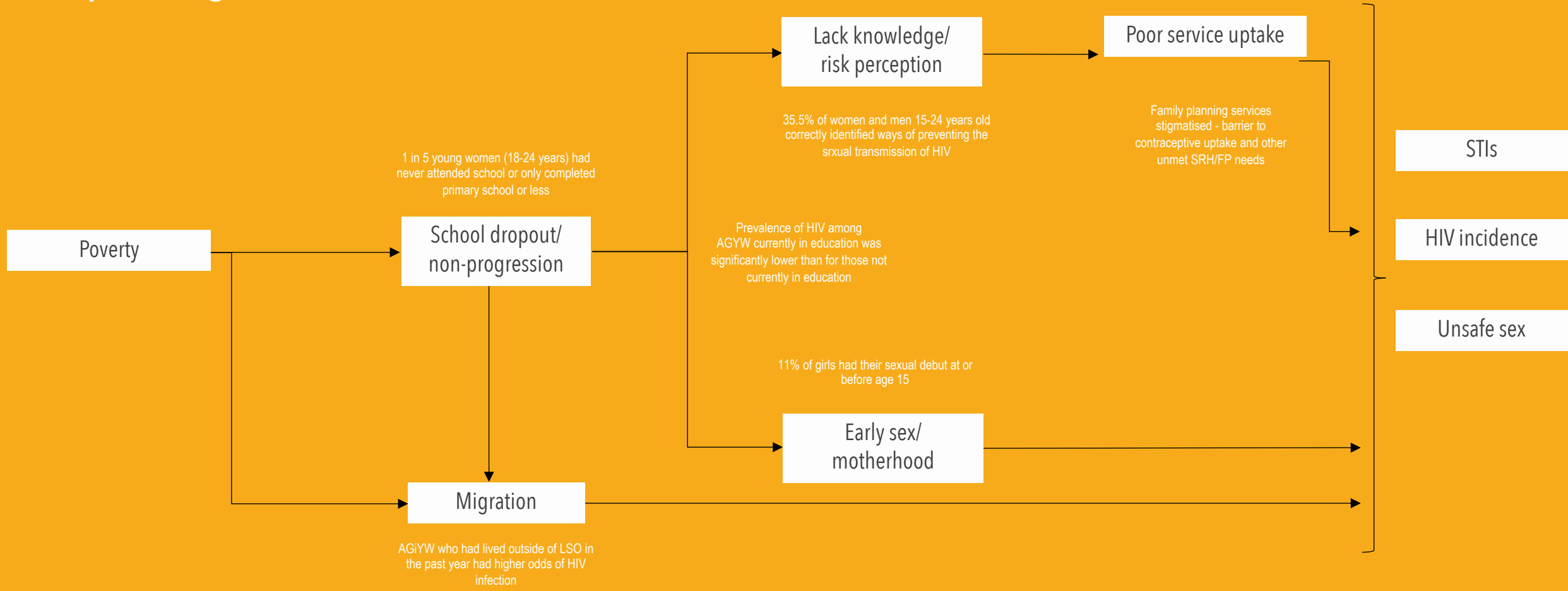


# KNOW YOUR AGYW EPIDEMIC



# PATHWAY 1

## Reducing school dropout/ Improving retention in school



# LEVERAGING EXISTING SOCIAL PROTECTION PROGRAMMES IN LESOTHO



**Power of leverage**



- Old Age Pension
- Free primary education
- School feeding programmes
- Worth groups
- OVC bursary
- Safe spaces/Girls clubs
- Public Assistance programme (Fato Fato)
- Adolescent mothers IGA
- Public works programmes
- Child Grant Programme
- Supplementary feeding programmes

# ROLE OF CASH AND CASH PLUS PROMOTE HEALTH OUTCOMES

- Strong evidence that Cash + interventions effective
- Impacts on multiple health and SDG outcomes
- Combinations need to respond to context specific drivers of poor health
- Cash + SBCC can promote gender transformational impacts
- Ensure complementary policies in place - e.g.. free education and health
- Opportunities for building evidence – including through social protection modules in MICS



# Thank you

