

**The evolution of a programme platform for marginalized adolescent girls and young women - 2009 to 2021**

**Primrose Matambanadzo, CeSHHAR Zimbabwe**

# SW Programme Coverage

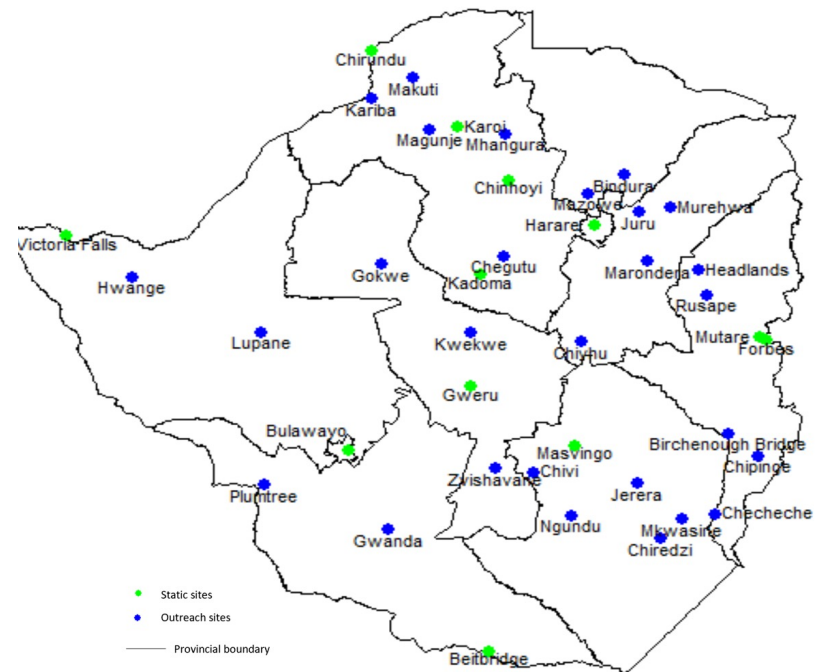
Sisters programme started in 2009 - 5 sites - 322 FSW seen  
**25.8% age <25 years**

2021 - 86 sites – 33 000 SW in their diversity seen  
**32.2 < age 25 years**

- >125,000 FSW seen since 2009

Unique alpha numeric identifier and detailed programme data collected from 2009 allowing detailed analysis

Zimbabwe Sisters Programme Sites



# National FSW implementation—research platform in Zimbabwe ‘Sisters with a Voice’

2009

2010 - 2012

2013

2014 -2015

2016 –2018

2019 –2020

## Programme providing platform for implementation research

Demonstration projects Harare and 4 outreach sites  
**322 FSW** got clinic services  
**25.8% <25 yrs**

Expanded to 3 fixed + 13 outreach sites – began community mobilisation  
**9,502 FSW** got clinic services –  
**24.6% <25 yrs**

Expanded to 6 fixed + 30 outreach sites.  
**6,151 FSW** got clinic services  
**24.7% <25yrs**

Intensify outreach,  
**Roll out Young Sisters to 3 sites 24,436 FSW** got clinic services  
**27.3% <25 yrs**

**Implement DREAMS for YWSS**, pilot microplanning and SHGs, **47,450 FSW 36.2% <25 yrs** attended clinic services

Expanded to MSW TGSW, 86 sites, on-site ART / PrEP, DREAMS expanded, safe spaces, SHGs / microplanning expanded, **38,748 FSW 32.2% <25** attended clinical services

Formative work to support programme development

RDS + qualitative research, 1 regional HIV prevalence and prevention / care cascade estimates in FSW

**YGSS needs assessment – develop ‘Young Sister,’** SAPPH-IRe trial, PrEP cascade, stigma analyses

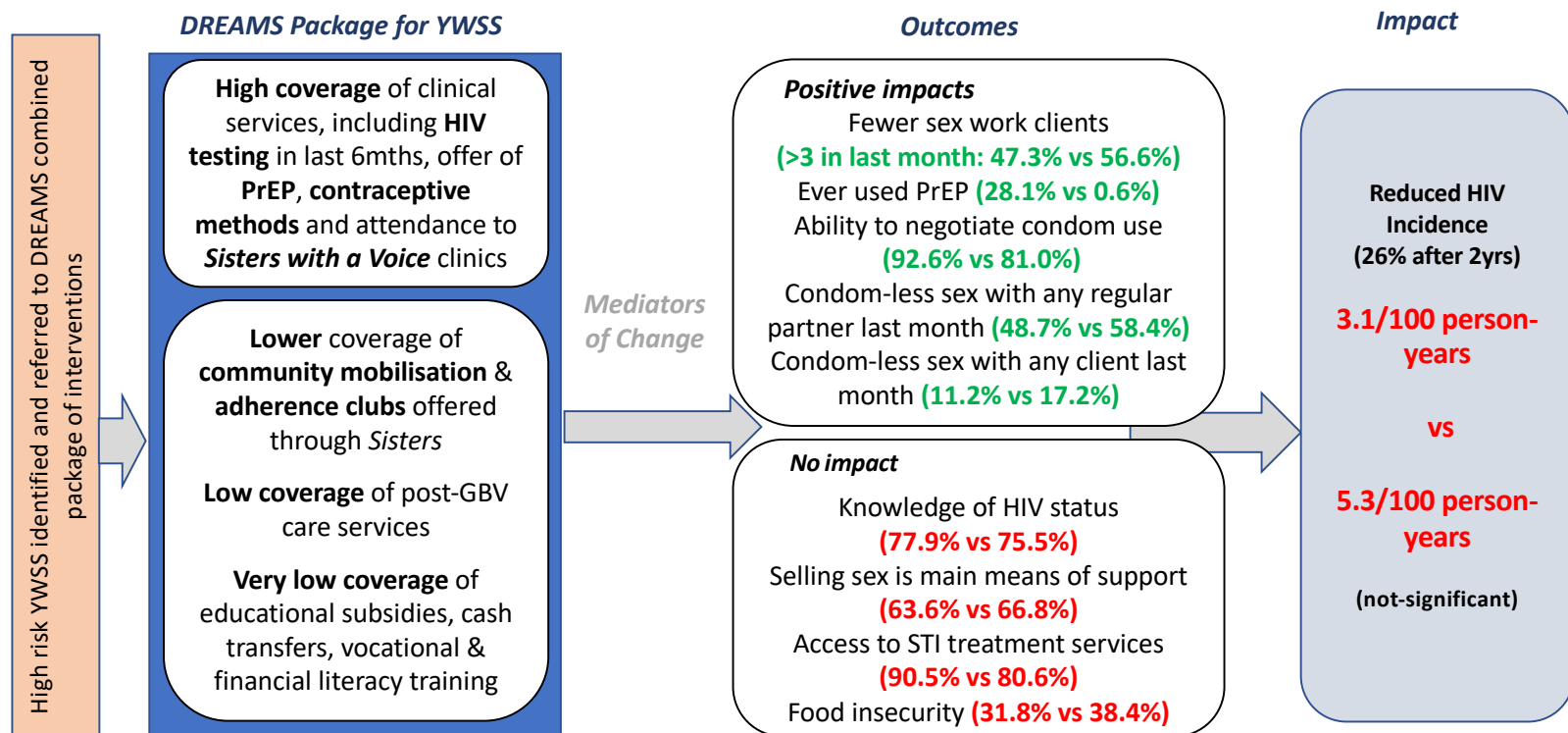
Programme data analysis to provide one of first African estimate of HIV incidence in FSW  
**Highest in < 25yrs**

SAPPH-IRe trial completed, migration study, national size estimation, **DREAMS Impact evaluation, mapping 16-19 yr AGYWSS, recency testing,** modelling

WT funded AMETHIST research underway. BMGF MeSH consortium on recency testing, **studies to inform sex work life course influences on cascade engagement incl. YWSS**

## Research guiding ‘Sisters’ programme scale up

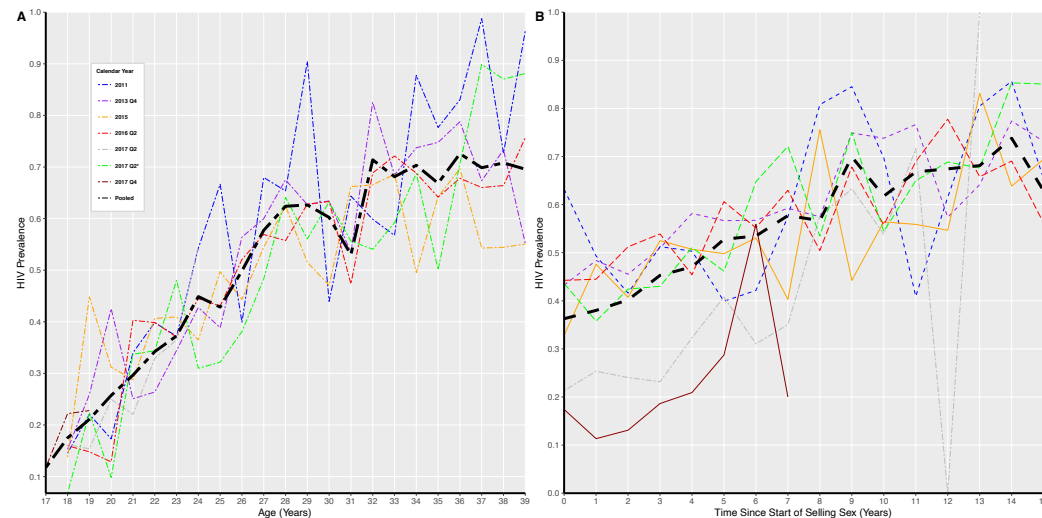
# Pathways of impact of DREAMS among YWSS in Zimbabwe



## Combined SW Programme RDS surveys incidence versus prevalence

- 5 studies, 21 sites, 2011-2017
- 9906 FSW; HIV prevalence 50.5%
- For each year of age, we estimated: HIV prevalence ( $P_t$ ) and the change in HIV prevalence from the previous age ( $P_t - P_{t-1}$ ).
- Estimated the rate of new HIV infections during that year of age:  
 $I_t = P_t - P_{t-1} / (1 - P_{t-1})$
- Calculated HIV incidence for 18-24 and 25-39 year-olds separately as the weighted average of  $I_t$ .
- Estimated HIV incidence for FSW 1-5 years and 6-15 years since first selling sex using the same approach

Ali, de Wit et al submitted



- **18-24 year-olds - 6.3/100 pyar (95%CI 5.3-7.4)**
- 25-39 year-olds 3.3/100 pyar (95% CI 2.7-4.0)
- **1-5 years since first selling sex 5.3/100 pyar (95% CI 4.5-6.1)**
- 6-15 years since first selling sex 2.1/100 pyar (95% CI 1.4-2.9)

# Moving forward

- YWSS appear more likely to transition in and out of SW – how does this affect engagement in prevention and care cascades?
  - Need to better characterise young FSW and their partners (tracing study, diary study and population data)
  - Better characterise locations, populations and individuals at greatest HIV risk to inform HIV prevention programmes
- **Tracing study** – 16 -19 year olds
  - **Longitudinal diary study** – 16 -19 year olds
  - **RDS surveys at 22 sites** nationally (4,400 FSW aged 18+ with rich biobehavioural data)
    - Recent infections and its determinants
    - Prevention and treatment cascade analyses (include biomarkers of PrEP and condom use)
  - **PLACE studies** – expanded to include more detailed network analysis of partnerships
  - **Recency study** across all 86 sites – with recency guided prevention strengthening



Thank you